



ADHESIVE



29 oz. • 10.5 oz

SRW RETAINING WALL & PAVER ADHESIVE

SRW Retaining Wall & Paver Adhesive is a durable, fast acting, professional strength adhesive with superior time-tested performance. It is formulated especially for masonry, concrete, brick, block, pavers and common landscaping materials. It can even be used to bond wet, frozen or damp surfaces.

- Ideal for wet or frozen surfaces
- Extrudes well in low temperatures
- Provides a strong, durable bond
- Waterproof

DIRECTIONS

1. Surfaces should be clean and free from oil, grease, excessive water, ice or any other material which may deter adhesion.
2. Cut tip on slant for 1/4" or 3/8" bead. Puncture inner seal with nail or wire. Place cartridge in a caulking gun.
3. Apply adhesive with the caulking gun to only one of the surfaces to be joined. Apply in a continuous bead to ensure complete coverage. Apply no more adhesive than you can cover in 20 minutes.
4. Press surfaces together firmly with a slight twisting motion. For faster curing, lift up top product and immediately reposition.
5. Vertical or slanted applications may require additional bracing until adhesive has dried.
6. Allow 48-hour cure time and 4-5 days before walking on any steps or heavy traffic areas.

Cleanup • Scrape off dried excess adhesive with a putty knife. Remove residue with mineral spirits. (Note: Test cleaning solvent on an out-of-way area to make sure it will not mar the surface to be cleaned.) Storage life: More than 12 months in tightly closed container at 75°F. Do not store in direct sunlight.

USER TIPS

- On tumbled products, make sure surface is clean of any dust, dirt or material that may deter proper adhesion. We recommend using a 3/8" bead.
- On grooved materials, make sure you have a full positive connection of adhesive to both surfaces.
- Do not apply in temperatures below 10°F.
- Do not use below the waterline or for continuous submersion. Not recommended for fiberglass, rubber, plastic or foam.



TREATMENTS

SEALERS and CLEANERS



PAVER SEAL

Water-based • Sand Stabilizer • UV Resistant

A water-based sealer and sand stabilizer used to seal, bond and protect pavers, brick, block or masonry. It produces a clean, breathable, low-gloss finish that can enhance interior or exterior surfaces. Paver Seal also works as a sand stabilizer for new or existing projects — preventing growth of weeds and grass in-between paver joints.



PAVER SEAL PLUS

Siloxane Water-based • Use on Horizontal & Vertical Applications

A siloxane water-based deep penetrating sealer. It enhances and retains the original appearance of pavers, brick, block, stone, and concrete surfaces with a low-gloss finish. Upon penetration it inhibits water absorption which causes efflorescence, spalling and freeze damage. Its special formula makes it ideal for both horizontal and vertical (retaining wall) applications.



EFFLORESCENCE CLEANER

Cleans Mineral Deposits and Rust

SRW Efflorescence Cleaner is a mildly acidic product which dissolves efflorescence (white mineral deposits) and rust stains from pavers, retaining walls, brick and concrete surfaces. We recommend using this product before sealing the surface.



CLEANER & DEGREASER

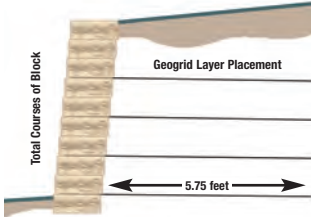
Removes Stains from Oil, Rust, Grease, Dirt

SRW Cleaner & Degreaser is a concentrated liquid cleaner that removes grease, dirt, rust and oil from pavers, retaining walls, brick, and concrete surfaces. This fast working, heavy-duty product dissolves stains and rinses clean with water.



GRID/FABRIC

SRW GEOGRID



Sample: 6' Retaining Wall using 8" Block
 See www.srwproducts.com for design charts or ask your distributor about a "Design Request Form" for larger projects.

SRW Geogrid is composed of high molecular weight, high tenacity multi-filament polyester yarns that are woven into a stable network placed under tension. The high strength polyester yarns are coated with a PVC material. SRW Geogrids are inert to biological degradation and are resistant to naturally encountered chemicals, alkalis and acids. It is typically used for soil reinforcement applications such as retaining walls, steepened slopes, embankments, sub-grade stabilization, embankments over soft soils and waste containment applications.



UNIVERSAL
 Bi-directional • LTDS 620



3 SERIES
 Bi-directional • LTDS 1040



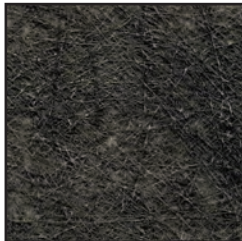
5 SERIES
 LTDS 1669

7, 8, 9, 10, 11 SERIES GEOGRID are also available for special order

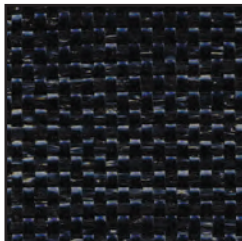
SRW FABRICS

SRW Geotextiles are superior quality fabrics. The fibers are specially formulated to resist ultraviolet light deterioration, and are inert to commonly encountered soil chemicals. This fabric will not rot or mildew, is non-biodegradable, and is resistant to damage from insects and rodents.

SRW has a full line of Polyspun, Spunbond, Woven, and Non-Woven fabrics available in over 100 sizes. Ask your distributor about special orders.



SB3
 3 oz Spunbond
 Drainage • General Landscaping



Black Woven (SS5)
 200 lb. Woven Slit Film
 Soil Separation and Stabilization

DID YOU KNOW?

- Using a soil stabilization fabric can improve the long-term performance of your project 50-70%.
- If the project is professionally designed, it could reduce required base material by as much as 30%.